

SEABREEZE

THE SEABROKERS MONTHLY MARKET REPORT

DECEMBER 2015

HAPPY NEW YEAR!



OSV MARKET ROUND-UP

2 DAILY NORTH SEA OSV AVAILABILITY - DECEMBER 2015

2 MONTHLY OSV SPOT RATES - NORTH SEA

3 OIL PRICE v RIG UTILISATION

3 MOBILE OFFSHORE DRILLING RIG DAY RATE COMPARISONS

3 CONUNDRUM CORNER

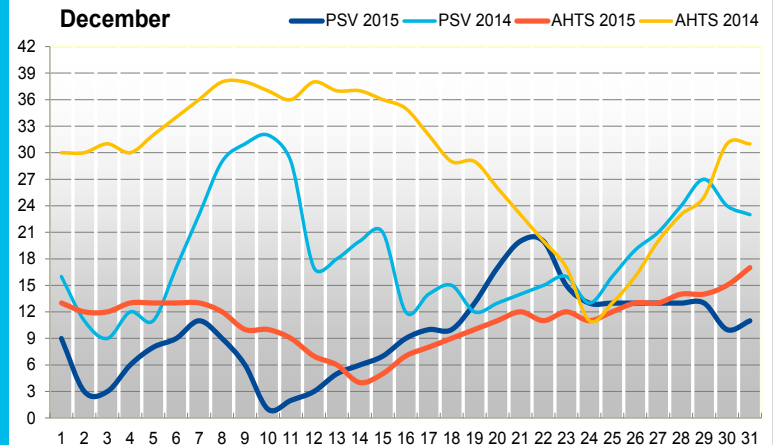
4 NORTH SEA AVERAGE SPOT MONTHLY OSV RATES

Production and Administration:
Seabrokers Ltd, Aberdeen
For your free copy of
Seabreeze, email:
chartering@seabrokers.co.uk

The Seabreeze Monthly Market Report is distributed worldwide through our offices in Aberdeen, Stavanger, Singapore and Rio de Janeiro.

© Seabrokers Group 2015

DAILY NORTH SEA OSV AVAILABILITY



RATES & UTILISATION

NORTH SEA SPOT AVERAGE UTILISATION DECEMBER 2015

TYPE	DEC 2015	NOV 2015	OCT 2015	SEP 2015	AUG 2015	JUL 2015
MED PSV	78%	77%	63%	73%	69%	71%
LARGE PSV	85%	78%	70%	83%	87%	83%
MED AHTS	62%	33%	38%	57%	58%	64%
LARGE AHTS	69%	67%	49%	50%	57%	66%

NORTH SEA AVERAGE RATES DECEMBER 2015

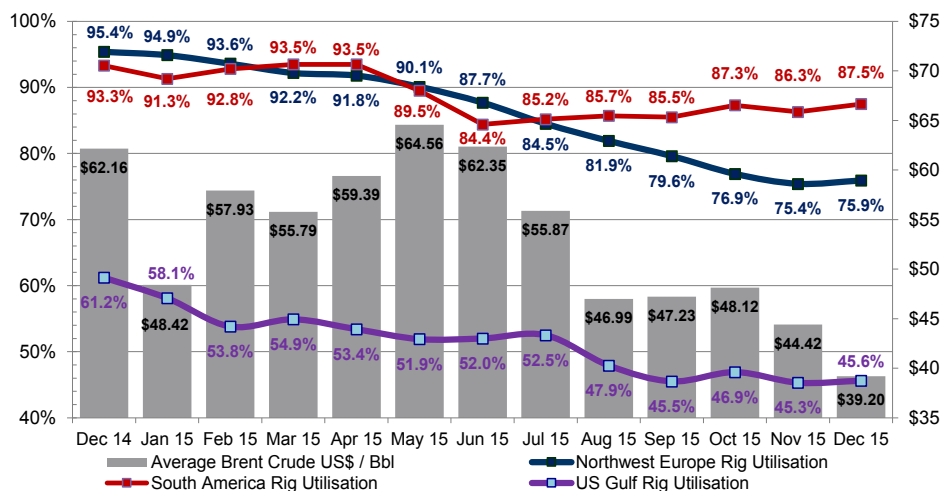
CATEGORY	AVG. RATE DEC 2015	AVG. RATE DEC 2014	% CHANGE
SUPPLY DUTIES PSVs < 900M ²	£8,195	£5,502	+48.95%
SUPPLY DUTIES PSVs > 900M ²	£8,106	£5,639	+43.75%
AHTS DUTIES AHTS < 18,000 BHP	£30,385	£6,708	+352.97%
AHTS DUTIES AHTS > 18,000 BHP	£45,377	£8,547	+430.91%

NORTH SEA AVERAGE RATES DECEMBER 2015

CATEGORY	MINIMUM	MAXIMUM
SUPPLY DUTIES PSVs < 900M ²	£5,000	£18,000
SUPPLY DUTIES PSVs > 900M ²	£4,250	£13,419
AHTS DUTIES AHTS < 18,000 BHP	£9,750	£65,000
AHTS DUTIES AHTS > 18,000 BHP	£10,000	£100,000

RIG UTILISATION & DAY RATES

OIL PRICE VS RIG UTILISATION



RIG UTILISATION & DAY RATES

THE SEABREEZE ARCHIVE

LOCATION	DEC 2015	DEC 2014	DEC 2013	DEC 2012	DEC 2011
NORTHWEST EUROPE	75.9%	95.4%	98.6%	96.7%	94.8%
SOUTH AMERICA	87.5%	93.3%	97.4%	97.8%	96.7%
US GULF	45.5%	61.2%	73.8%	72.6%	61.9%

For the current or archive copies of Seabreeze go to: <http://www.seabrokers.co.uk/> - see under Shipbroking / Market Reports. If you wish to Subscribe or Unsubscribe please contact : chartering@seabrokers.co.uk

RIG TYPE	AVERAGE RATES US\$
SEMISUBMERSIBLE < 1,500 FT WD	255,000
SEMISUBMERSIBLE > 1,500 FT WD	366,000
SEMISUBMERSIBLE 4,000 FT + WD	413,000
DRILLSHIP 4,000 FT + WD	513,000
JACKUP IC 300 FT WD	104,000
JACKUP IC 300 FT + WD	167,000

SEABROKERS GROUP CONTACTS

SEABROKERS HEAD OFFICE
 Forusbeen 78 - 4033 Stavanger - Norway
 Tel: (+47) 51 80 00 00
 Internet: www.seabrokers-group.com

SEABROKERS CHARTERING AS - STAVANGER
 Duty Telephone ++47 51 815400 (24 Hrs)
 E-mail chartering@seabrokers.no

SEABROKERS LTD - ABERDEEN
 Duty Telephone ++44 1224 747744 (24 Hrs)
 Duty Mobile ++44 7802 304129
 E-Mail chartering@seabrokers.co.uk

SEABROKERS BRAZIL LTDA - RIO DE JANEIRO
 Duty Telephone ++55 21 3505 4200 (24 Hrs)
 E-mail chartering@seabrokers.com.br

SEABROKERS PTE LTD -SINGAPORE
 Telephone ++65 6224 6062 or 0951
 E-mail chartering@seabrokers.sg

CONUNDRUM CORNER

In the last Seabreeze, Erik Christoffersen (General Manager of Seabrokers Aberdeen) was pictured with a 1980s band. We asked you to name the band.

The correct answer was :- Simple Minds

This month, our poser is as follows:

Rearrange the following letters to give a well-known proverb with an associated meaning:

STROLLER ON GO AMASSES NOTHING

Answers back to chartering@seabrokers.co.uk for a chance to win a bottle of wine.

NORTH SEA AVERAGE SPOT RATES

NORTH SEA AVERAGE SPOT MONTHLY RATES

